



# Admission Book 2014

Office of International Students  
Beijing Institute of Technology

November 2013



## WELCOME MESSAGE FROM THE DIRECTOR

Dear students and colleagues,

Thank you for your interests in Beijing Institute of Technology. As one of the top science and technology universities in the nation, we offer a high-level education for degree and language study. With top-tier faculty and programs, friendly staff, and a pleasant living environment, I know that you will not be disappointed in choosing BIT as your university of choice. With many strong and prestigious science and technology programs to choose from, you will receive quality education and have great future job prospects.

Since BIT is located in the capital of China, you will be in the heart of the nation, surrounded by a city that has integrated modern conveniences together with the rich treasures of a culture with more than 5,000 years of history. Your choice of BIT will be rewarded with a wonderful university experience. We look forward to welcoming you here in Beijing!

Sincerely,

Wang Ying (Ms.)  
Director  
Office of International Students





# Contact Us



## Director

Tel: 0086-10-68918316  
Mobile: +86-13910172716  
wangying318@gmail.com  
yingwang@bit.edu.cn

Wang Ying



## Associate Director

Tel: 0086-10-68912934  
Mobile: +86-13520186272  
zhaokun@bit.edu.cn

Zhao Kun



## Assistant to Director & Public Relations

Tel: 0086-10-68918272  
Mobile: +86-18801107550  
sabrinashe2013@gmail.com  
jiaweishen@bit.edu.cn

Shen Jiawei

## Applicants please contact:



## Undergraduate Programs

Tel: 0086-10-68918272  
Mobile: +86-18610087116  
undergraduate@bit.edu.cn

Ma Wei



## Graduate Programs

Tel: 0086-10-68918120  
Mobile: +86-13811275770  
master\_phd@bit.edu.cn

Chen Hui



## Chinese Language Study Programs

Tel: 0086-10-68912847  
Mobile: +86-13681519360  
studychinese@bit.edu.cn

Zheng Hailan

# BEIJING INSTITUTE OF TECHNOLOGY



Academy of Natural Sciences, Yan'an



1940

1949

1952

1959

1988

1995

2000

Beijing Institute of Technology (BIT)  
北京工业学院

Beijing Institute of Technology (BIT)  
北京理工大学

"985 Project"

Moved to Beijing

Undergraduate & Graduate  
Degrees

"211 Project"







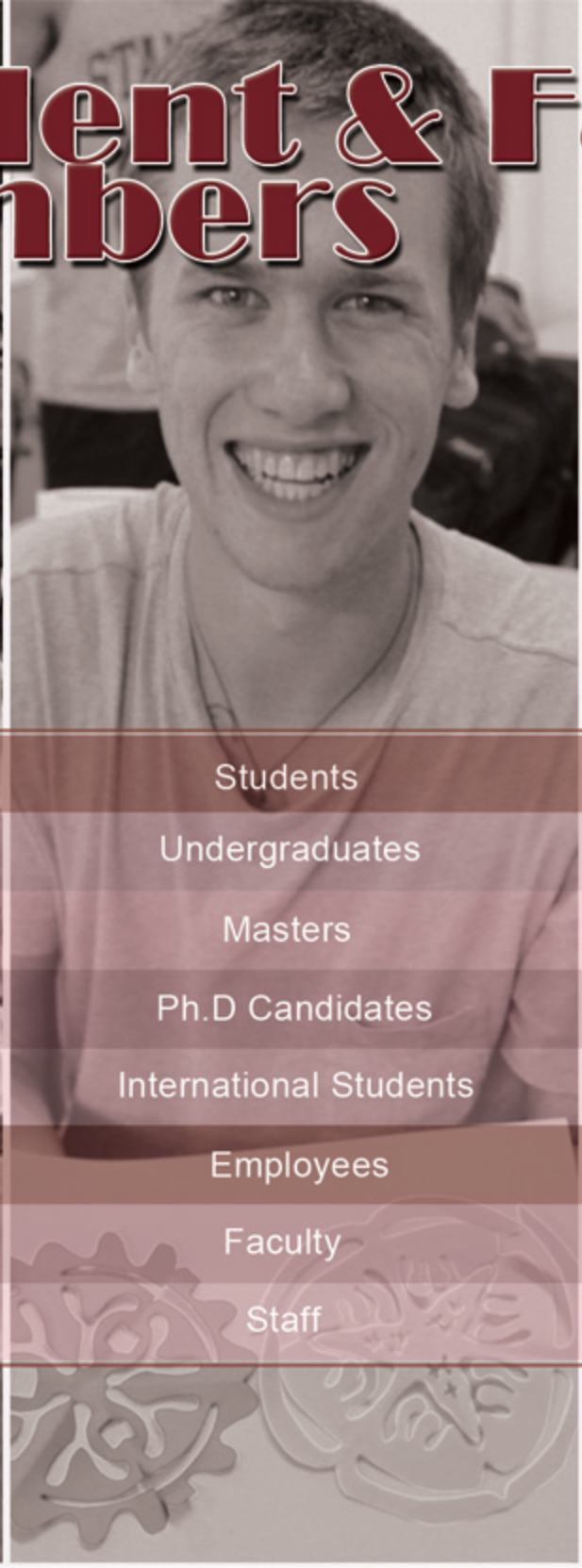
# CONTENTS

---

<u>Top Ranking Programs in China</u>	<u>1</u>
<u>Undergraduate Programs</u>	<u>3</u>
<u>Master Programs</u>	<u>5</u>
<u>PhD Programs</u>	<u>7</u>
<u>Scholarship</u>	<u>8</u>
<u>How to Apply</u>	<u>17</u>
<u>Tuition</u>	<u>18</u>
<u>Research</u>	<u>19</u>
<u>Campus Life</u>	<u>27</u>




# Student & Faculty Members



Students	25,885
Undergraduates	14,110
Masters	8,075
Ph.D Candidates	3,037
International Students	790
Employees	3,504
Faculty	2,005
Staff	1,499





**Top Ranking Programs  
in China**

Mechanical Engineering

Aerospace Engineering

Applied Mechanics

Optoelectronics

Information and Telecommunication

Automatic Control

Material Science and Technology

Applied Chemistry

Mathematics

Management Engineering

# Undergraduate Programs

(Chinese & English\*)

Aerospace Engineering\*  
Mechatronics Engineering\*  
Mechanical Engineering\*  
Optoelectronics  
Information and Electronics\*  
Automation\*  
Computer Science and Technology\*  
Software\*

Material Science and Engineering  
Chemical Engineering and Environment  
Life Science  
Sciences  
Management and Economics\*  
Humanities & Social Science  
Law  
Foreign Languages  
Design and Arts



# Undergraduate Programs in English

---

---

## Electrical Engineering

Core courses: Adaptive Control, Analog Electronics, Computer Control System, Control Theory, Data Structures and Algorithms Design, Energy Conversion Technology, Engineering Design, Engineering Mechanics, Optimal Control, Physics, Mathematical Analysis, Sensors and Detection Technology, Signals and Systems, Power Electronics, Control of Robotics

## Software Engineering

Core courses: C Programming Language, Computer Networks, Computer Organization, Discrete Mathematics, Data Structures, Database Theory and Design, Software Engineering, Design and Analysis of Algorithms, Operating Systems, Software Architecture and Design Patterns, Software Requirement Engineering and Modeling, Software Testing Technology

## Electronic Science and Technology

Core courses: Algorithms Design and Analysis, Assembly Language Programming, Discrete mathematics, Compiler Principle and Design, Computational Theory, Computer Networks, Database Theory and Design, Fundamental of Electronics, Operating Systems, Principles of Computer Architecture, Software Engineering, Wireless Network and Communication

## Computer Science and Technology

Core courses: Algorithms Design and Analysis, Assembly Language Programming, Compiler Principle and Design, Computational Theory, Computer Networks, Data Structures, Database Theory and Design, Discrete mathematics, Fundamental of Electronics, Information Security, Linear Algebra, Operating Systems, Probability and Statistics, Programming in C, Software Engineering

## Flight Vehicle Design and Engineering

Core courses: Calculus, Theoretical Mechanics, Fundamentals of Fluid Mechanics, Complex Variable and Integral Transformation, Automatic Theory, Electrical and Electronic Technology, Engineering Drawing, Fundamentals of Machine Design, Computer Fundamentals and Programming, Flight Vehicle Systems, Aerodynamics, Flight Mechanics, Structural Mechanics, Aircraft Design, System Simulation, Principles of Optimization Design.

## Mechanical Engineering

Core courses: Calculus, Computer Science and Programming, Dynamic System Modeling and Simulation, Electrical and Electronics, Engineering Design Project, Engineering Economics, Engineering Graphics, Engineering Management,

Engineering Materials, Engineering Mechanics, Fluid Mechanics, Internal Combustion Engine Design, Vehicle Structure and Design, Theory of Machines and Mechanisms, Principle of Control and Instrumentation

## International Economics and Trade

Core courses: Calculus, Econometrics, Financial Management, Fundamentals of Accounting, Human Resource Management, International International Finance, International Marketing, Macroeconomics, Management Information Systems, Microcomputer Database Applications, Microeconomics, Monetary Banking, Operation Research, Principle of Management,

## Intelligent Mechatronic Engineering

Core courses: Material Mechanics, Mechanical Design, Mechatronic Control Techniques, Mechatronic Servo Systems, Mechatronic System Analysis & Design, Mechatronic System Modeling and Simulation, Modern Power Electronic Technology, Sensing and Testing Technology, Signals and Systems, Theoretical Mechanics, Fundamental of Robotics, Computer Control Systems, Analog Electronics, Adaptive Control, Electric Circuits

# Master Programs

(Chinese & English\*)

Aerospace Engineering  
Mechatronics Engineering  
Mechanical Engineering\*  
Optoelectronics  
Information and Electronics\*  
Automation\*  
Computer Science and Technology  
Software\*  
Material Science and Engineering  
Chemical Engineering and Environment

Life Science  
Mathematics  
Physics  
Chemistry  
Management and Economics \*  
Humanities and Social Sciences  
Law  
Foreign Languages  
Design and Arts  
Education





## Master Programs in English

---

Control Science and Technology

Electronics and Communication Engineering

Mechanical Engineering

Software Engineering

MBA

# PhD Programs in English

Aerospace Engineering  
Mechatrical Engineering  
Mechanical Engineering  
Optoelectronics  
Information and Electronics  
Automation  
Computer Science and Technology  
Material Science and Engineering  
Chemical Engineering and Environment  
Life Science  
Mathematics  
Physics  
Chemistry  
Management and Economics  
Institute of Education





# What Scholarship Programs do we have?

Sino-US Cultural  
Communication

Special  
Scholarship



Beijing  
Municipal  
Government  
Scholarship



Chinese  
Government  
Scholarship



Central and  
Eastern Europe  
Special  
Scholarship



BIT Elite  
Professor  
Scholarship



Contact : Ms Chen Hui [chenhui410@gmail.com](mailto:chenhui410@gmail.com)



# Chinese Government

## Who pays for your education?

The Chinese government

## What does the scholarship cover?

Application, tuition, basic learning materials, experiment and internship

Accommodation (on campus or off-campus students dorms)

One-time settlement subsidy: CNY 1,500 (USD 245, or EUR185)

Comprehensive Medical Insurance

Monthly Living allowance: Undergraduate : CNY 1,400 (USD 225, or EUR175)

Master : CNY 1,700 (USD 275, or EUR 210)

PhD Candidates : CNY 2,000 (USD 325, or EUR 245)

Application deadline: April 30 / every year



# Scholarship Program



## Who can apply?

Non-Chinese Citizens

The last previous degree is not obtained in China

Not been offered this scholarship in the year before application

Age:

Categories of Applicants	Duration of Scholarship	Academic Requirement	Age Limit
Master	2-3 academic years	must have a bachelor's degree	under the age of 35
PhD	4 academic years	must have a master's degree	under the age of 40

## How to apply?

You can...

Register at <http://laihua.csc.edu.cn>, quote BIT's Agency No.is 10007.

Send application materials to BIT. (check <http://isc.bit.edu> for details)

You also can...

Apply at the Chinese Embassy in your country, and make sure to choose BIT as your first option.



# Beijing Municipal Government Scholarship

## Who pays for your education?

The Beijing municipal government

## What does the scholarship cover?

Undergraduate: Tuition	4 years max.
Master : Tuition	2.5 years max.
PhD: Tuition	4 years max.

## Who can apply?

Non-Chinese Citizens, with qualified previous academic records.

## How to apply?

Register on the application system at <http://studyatbit.com>.

Send application materials (check <http://isc.bit.edu> for details) to BIT.





# BIT Elite PhD Advisor Scholarship



## Who are the Elite Phd Advisors?

The academicians of Chinese Academy of Engineering and Chinese Academy of Sciences who based in BIT.

Prestigious professors with outstanding academic and research achievement.

## Who can apply?

Students with excellent academic records.

## Position for 2014

10-15, number varies each year depending on the number of selected advisors

## Age

No age limit



# Central and Eastern Europe

## Overview

The special scholarship program lasts from 2013 to 2017, and offers 1000 scholarships for Central and Eastern Europe countries applicants.

## Who pays for your education?

The Chinese government

## What does the scholarship cover?

Application, tuition, basic learning materials, experiment and internship  
Accommodation on-campus (on campus or off-campus students dorms)

One-time settlement subsidy CNY 1,500≈EUR186

Comprehensive Medical Insurance

Monthly living allowance of CNY 1,700 ≈EUR211

**(Note:** The full scholarship can be divided into several shorter terms for more than one student)



# Special Scholarship Program

## Who can apply?

Countries: Albania, Bulgaria, Bosnia and Herzegovina, Croatia, Czech, Estonia, Hungary, Greek, Latvia, Lithuania, Macedonia, Montenegro, Poland, Romania, Serbia, Slovakia, Slovenia, Turkey.

More than 6 month study period

The student's home university must recognize the credits that the students earned in the Chinese universities

**Application deadline:** May 31 of each year

(Note: The application deadline may change from year to year, please check BIT's yearly Admission Book for updated information.)

## How to apply?

Register on the application system at <http://www.studyatbit.com>.

Send the application materials to BIT (check <http://isc.bit.edu> for details).





# Sino-US Cultural Commun

## Who pays for your education?

The Chinese government

## What does the scholarship cover?

Application, tuition, basic learning materials, experiment and internship

Accommodation (on campus or off-campus students dorms)

One-time settlement subsidy: CNY 1,500 (USD 245, or EUR185)

Comprehensive Medical Insurance

Monthly Living allowance: Undergraduate : CNY 1,400 (USD 225, or EUR175)

Master : CNY 1,700 (USD 275, or EUR 210)

PhD Candidates : CNY 2,000 (USD 325, or EUR 245)

Application deadline: April 30 / every year



# Communication Special Scholarship



## Who can apply?

US citizens

The last previous degree is not obtained in China

Not been offered this scholarship in the year before the application

Age

Categories of Applicants	Duration of Scholarship	Academic Requirement	Age Limit
Master	2-3 academic years	must have a bachelor's degree	under the age of 35
PhD	4 academic years	must have a master's degree	under the age of 40

## How to apply?

You can...

Register at <http://laihua.csc.edu.cn>, quote BIT's Agency No.is 10007.

Send application materials to BIT. (check <http://isc.bit.edu> for details)

You also can...

Apply at the Chinese Embassy in your country, and make sure to choose BIT as your first option.

# How to Apply ?

Please log on at [www.studyatbit.com](http://www.studyatbit.com) to create an account, complete the online application form, and submit all required materials.

The application procedure is as follows:

- 1 Create an account
- 2 Fill in online application form (Upload required documents)
- 3 Waiting for University response
- 4 Print out application form and submit hardcopy of all the required materials to the University

## Contacts:

**Undergraduate Programs: Ms Ma Wei** Tel: 0086-10-68918272 0086-18610087116 [undergraduate@bit.edu.cn](mailto:undergraduate@bit.edu.cn)

**Graduate Programs: Ms Chen Hui** Tel: 0086-10-68918120 0086-13811275770 [master\\_phd@bit.edu.cn](mailto:master_phd@bit.edu.cn)

**Chinese Language Study Programs: Ms Zheng Hailan** Tel: 0086-10-68912847 0086-13681519360 [studychinese@bit.edu.cn](mailto:studychinese@bit.edu.cn)



# If you wish to be self-funded, the tuition for the programs is:

Undergraduate	Graduate	PhD	Language	Short programs
<p>Programs in Chinese: CYN 23,600 /year (≈EUR2,924; ≈USD3,853)</p>	<p>Programs in Chinese: CYN 32,600 /year (≈EUR4,039, ≈USD5,327)</p>	<p>CYN45,000 /year (≈EUR5,575; ≈USD7,353)</p>	<p>Language &amp; Culture: CYN8,500 /semester (≈EUR1,053; ≈USD1,389)</p>	<p>EUR30-50/day USD40-70/day</p> <p>(Including tuition, accommodation, insurance, field trips to the Forbidden City, Summer Palace, Great Wall, etc.)</p>
<p>Programs in English: CYN 30,600 /year (≈EUR3,791; ≈USD5,003)</p>	<p>Programs in English: CYN 36,600 /year (≈EUR4,534; ≈USD5,980)</p> <p>MBA in English: CYN39,600/year (≈EUR4,906; ≈USD6,470)</p>		<p>Preparatory Course: CYN 10,300 / semester (≈EUR1,276; ≈USD1,683)</p>	

# New Technology in Mechanical Engineering

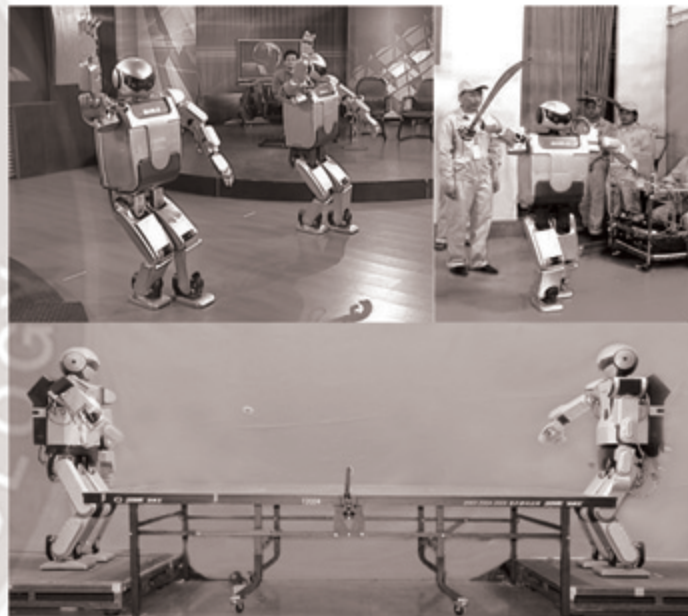
<http://me.bit.edu.cn/>



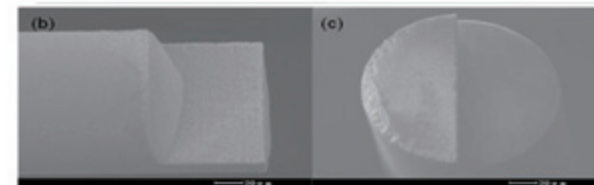
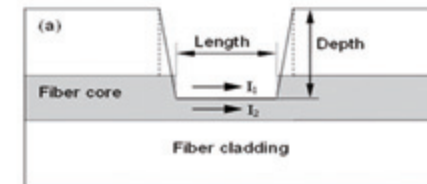
- Pure Electrical Bus for the Beijing Olympic Games in 2008 and Shanghai World Expo in 2010, in market now
- Hydrogen internal-combustion engine in various tests
- Ionic coating technology for heating protection, surface hardening, etc



# New Technology in Mechatronics Engineering

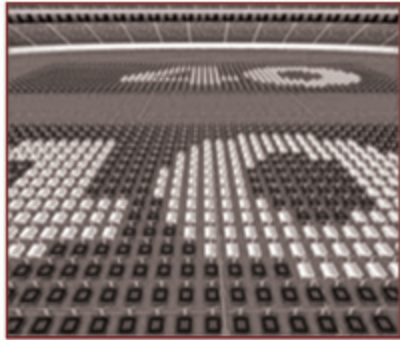


Humanoid robots can distinguish high-speed objects, make dynamic balance, and play table tennis with each other.

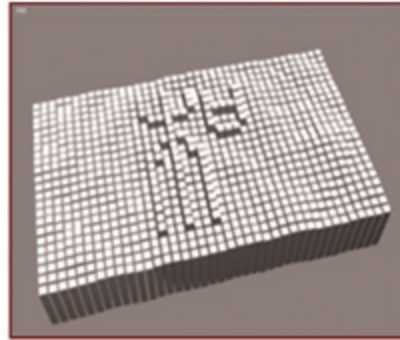


Laser fabrication: betavoltaic batteries with ultra-high power density and ultra-long lifetime; MZI sensors with ultra-sensitive, high-temperature performance.

**Simulation software was utilized for rehearsing the opening and closing ceremonies of the Olympic Games.**



Countdown



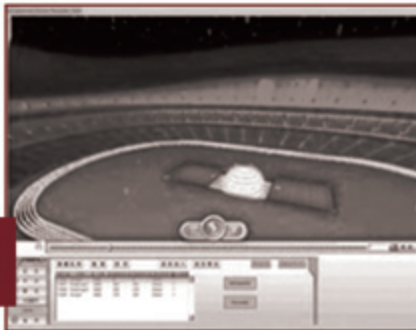
Character



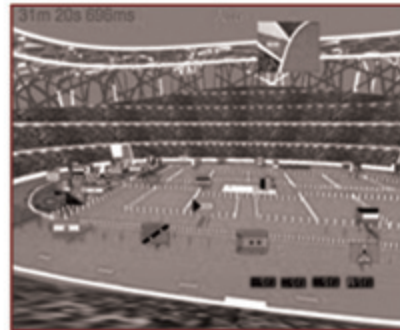
Taiji



Starlight



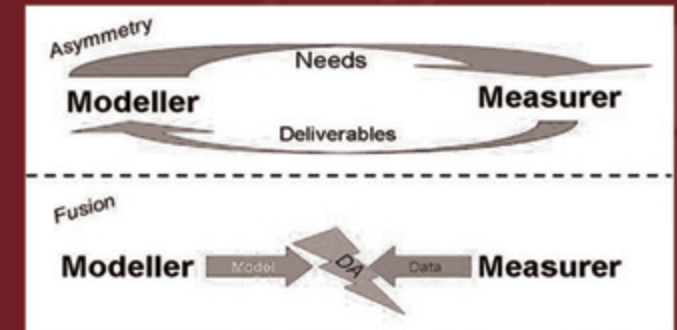
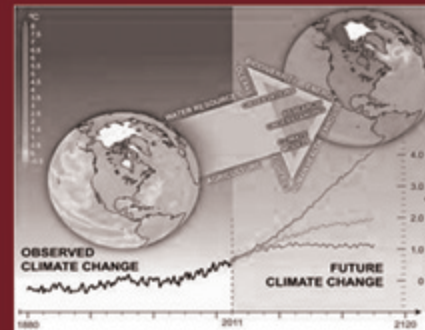
Dream



Athletes Parade

# High-tech in Software Engineering

<http://ss.bit.edu.cn/HomeWeb/Index/English.html>



## Virtual ecological society

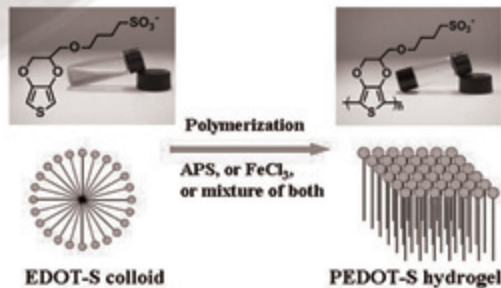
Virtual ecological society aims to identify the true CO<sub>2</sub> source and the feasible methods to reduce emissions in real world



# Breakthroughs in Chemical & Environmental Engineering




A novel conducting polymer hydro-gel with 2D building blocks indicates promising application to purifying waste water containing organic dyes.



Environmentally friendly firework invented for the opening ceremonies of both Beijing Olympic Games in 2008 and Shanghai World Expo in 2010.

# High-tech in Aerospace Engineering

<http://www.bit.edu.cn/xxgk/xysz/index.htm>

A composite image of deep space exploration. In the foreground, the planet Saturn is shown with its prominent rings. To the left, the Moon is visible. In the background, a satellite with a large dish antenna is positioned. The scene is set against a dark space background with stars and galaxies.

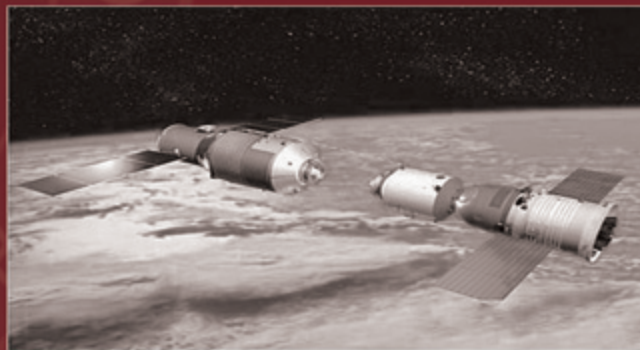
Deep space exploration:  
Chang'e II Trajectory for Sun-Earth L2 Lissajous orbit realized.  
Trajectory design for Lunar Orbiter Chang'e II to detect the small planet Toutatis, which is 7,000,000 km away from the Earth.



# New Breakthrough in Electronics



Terahertz technology:  
monolithic integrated circuit  
of Schottky diodes and  
quasi-optical mixer/detector



Real-time signal processor of microwave radar  
for Spacecraft Shenzhou VIII unmanned  
docking with Space Module Tiangong I



# Programs in Design & Arts

<http://design.bit.edu.cn/>



Digital Interactive Arts



Ceramics Studio



Digital Interactive Arts

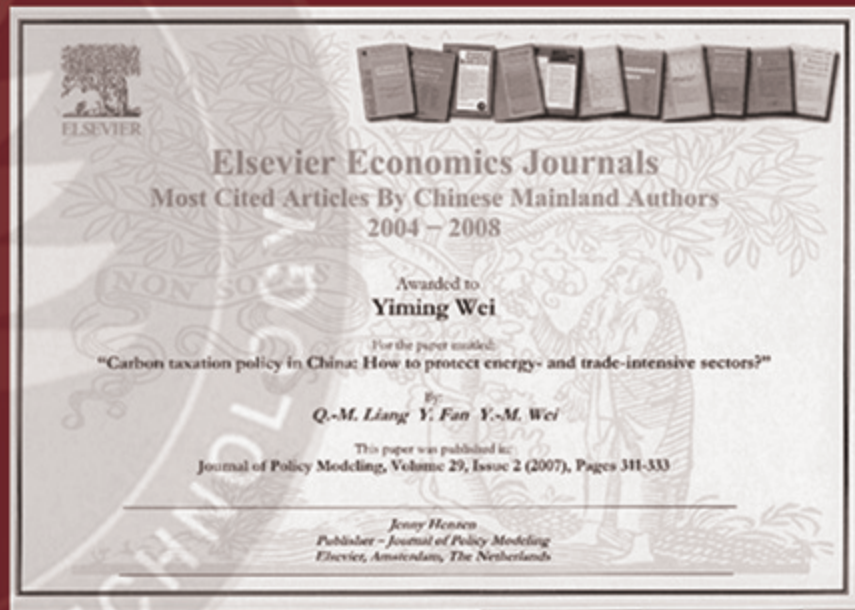


Student design gaining the Silver Award of  
the 9th China Environmental Art Design School in 2011



# Programs in Economics & administration

<http://sme.bit.edu.cn/>



Studies on energy policy, such as carbon taxation, received numerous citations all over the world.



Impact study on agriculture policy of biotech plants published at Nature Biotechnology, 2012

# Wolong Game





# Wonderful



# Residen





# trial life





Beijing Institute of Technology

The Office of International Students

5 South Zhong Guan Cun Street, Hai Dian District, 10081, Beijing, P.R, China.

Tel: +86-13520186272

Fax: +86-10-68914846

E-mail: [isc@bit.edu.cn](mailto:isc@bit.edu.cn)

Website: <http://isc.bit.edu.cn>

<http://www.bit.edu.cn>